

We Provide Professional Nursing Care Service for 26 Years



Life Co., Ltd.

Corporate Profile

1. Greeting
2. The characteristics of our business
 - (1) A Business for Social Missions
 - ① Stimulate inner vitality of the senior residents ® by a Nursing care with vitality ®
 - ② Make a society which the senior residents can support each other.
 - ③ Reduce the nursing care fatigue of family members
 - (2) Training and Education For Employees
 - ① A Promise to our customers: Our Faith ~Our Basic Actions~
 - ② Volunteer promotion system~A trial system for promotion ~
 - ③ Messages From staffs
 - (3) About Our Business
 - ① Nursing home for the aged
 - ② Housing for elderly with services
 - ③ Home visit service
 - ④ Support for nursing care at home
 - ⑤ Home Management Service
3. Corporate Information
 - (1) Company profile
 - (2) Management structure
 - (3) Branches





【A message from CEO Mr. Yoshida】

Our company turned to a new beginning by created Life Holdings Co., Ltd. In Dec, 2014. Now, we became a group contains 6 companies, 1 association and 1 Nonprofit Organization. What we are aiming is to develop an unlimited international business. One is to export safe and secured food manufacture management system to the whole world. At the same time, we will build a new route to deliver certified safe foods to the whole world. What's more, as we have lots experiences in senior nursing care business in Japan, an aging country. We understand the senior well so we can make evolutionary new services for the senior nursing care market and develop new technology based on our knowhow. Life Group will make effort on challenging to build and strengthen a social mission business as always.

President of Life Group
Shinichi Yoshida

【A Message from Director Mr. Kobayashi】

We started an elderly person support project in 1995 before the nursing care insurance system was implemented, and we offered a safe, reliable, and lively life to the 80000 elderly people.

It is said that Japan's aging ratio exceeds 26% and exceeds 30% in ten years. In this "ultra aging society", the environment surrounding the elderly people is expected to become more severe. Even in an age of opaque and environmental change, we promise to create a society that can be enjoyed by the elderly through the care service.

As a social mission, we will continue to tackle the aging society as a social mission. It is a business that goes ahead of the social contribution, and it is convinced that it is a social mission business that can be done only to us.



Director of Life Co., Ltd.
Tsukasa Kobayashi

The nursing service provided by our corporate is not only the necessary nursing for survival, we regard it as a social mission, and we are also focusing on human resource development for this.

A Business for Social Missions

- 1 Stimulate inner vitality of the senior residents ® by a Nursing care with vitality ®
(P.5~P.6)
- 2 Establishing a community for the elderly to help the elderly
(P.7~P.8)
- 3 Reduce the burden of family care (P.9)

Human resources development

- 1 Promise to you
article of faith for Life
~Our basic actions~ (P.11)
- 2 Self-report promotion system
~Trial system~
(P.12)
- 3 Employee message
(P.13~P.14)

1 Stimulate inner vitality of the senior residents ® by a Nursing care with vitality ®

- The nursing service provided by our corporate is not only the necessary nursing for survival.
- You will be able to experiences more fulfillment everyday comparing with staying at home.

2 Establishing a community for the elderly to help the elderly

- In this super aging society, only young people are not enough to support elderly people. We must build a new community which elderly people can support each other.
- We are actively employing the elderly people. We want to make the elderly people recognize their importance to this society and what contribution they can make.

3 Reduce the burden of family care

- Elderly people care elderly people. Because of the progress of aging, there are many social problems related to nursing care.
- We want to help many elderly people and their families who need care services.

New Life Service

According to different needs of each resident, our corporate provides a full life experience at home
And above to stimulate life vitality.

Stimulate inner vitality of the senior residents ® by a Nursing care with vitality ®



Lunch in a famous restaurant



A seasonal meal



One-day Hot spring tour



Shopping in Ginza



Visit the Imperial Palace



Picking strawberries on a hike

First experience,
What you cannot do without care,
What we did in the past and want to do again.
Things that are difficult at home,

New Life Service is an unique service created by LIFE co., Ltd.
Use curiosity to stimulate vitality

Life Care Concierge®

Provide new services to create the definition of the value of life of residents!

It's the "Life Care Concierge®".

In the nursing home care service to the residents who live in the facilities, it provides the service which is difficult to offer, and the service which is customized to the visitor is offered.

【Example 1】

The residents wanted to be able to attend the wedding of their relatives, so we accompanied them to the wedding scene.



It was a good day and our customer had met so many relatives so she was quite happy.
---comment from a staff

【Example 2】

Residents who studied sculpture in College. We took her to a pictures exhibition by a wheelchair and she enjoyed very much.



She enjoyed the pictures which were drawn by many young students and told me those recalled her memories of her student days.
---comment from a staff



Communications In communities

We aim to create communities which our residents can live their lives positively and feel relaxed.

Make facility opened to near community

We aim to create a facility that is easier for the locals to enter.



Performance of local Japanese drum group

Provide communication chances

We provide a place for local people to communicate.



Dance performed by local senior citizen club

Feel the meaning of our lives

We strive to make the elderly and local people create and feel the value of life.



Employ local seniors as staff
(Powerful staff)

Fix the generation gap

The community interacts regardless of age and creates a place where elderly people can come to be cared.



A nearby high school brass band participates in the event

Powerful Staff

Life employs the elderly who want to work as powerful staff.

We can leave the work that cannot be done to the young staff such as the partner of the visitor, the recreation plan which utilized hobby and special technique.

(Hourly Salary 1,020~1,150yen since Oct,2019)



Mr. Toyoshi Sasagi (nickname)

Profile :

• **Age** : 75yo

• **Experience** :

Retired from a vehicle manufacture company

• **Interest** : gardening

• **Why joined us** :

After retired, I felt boring and don't want to stay at home. I still can work and want to make contribution to our society, so I joined LIFE after I saw the recruiting information.

Comment from facility administrator :

He is good at gardening so he can teach many residents in our facility to learn the skills of gardening. His age is near to our residents so they have endless shared topics to talk, now he is a very important role in our facility.

Wide acceptance range and professional supporting

We have experiences of nursing care near 3 decades and now over 2000 elderly residents is enjoying their lives under our protection and services.

○ Wide acceptance range

The nurse is able to manage the physical condition such as vital check and medication management, and respond quickly. Moreover, it corresponds flexibly to the case which has been refused in other companies.

- ☑ Terminal care
- ☑ Those who have many medical procedures
- ☑ Forced to be discharged from the hospital
- ☑ Severe dementia

○ For urgent cases

In case of emergency, you can move in the same day.
In some cases, the guide was provided in a minimum of 30 minutes.

※Relevant conditions must be met

- ☑ The caregiver has fallen
- ☑ Could not enter the hospital
- ☑ Falling, making home life difficult

**1****A Promise to our customers: Our Faith ~Our Basic Actions~**

- The staff members who work at LIFE differed from genders, experiences, and ages.
- We Created a LIFE Belief ~ Our Basic Actions ~ to make sure all our staffs are making effort in the same direction.

2**Volunteer promotion system~A trial system for promotion ~**

- LIFE has a "trial system" that allows employees to challenge themselves for promotion to enable them feel the value of their work.
- Instead of waiting for a recommendation from your boss, you can challenge yourself to a higher position if your want.

3**Messages From staffs**

- Care management, sales, and planning positions — every position is important for us, our work won't run smoothly without any of them.
- We gathered messages from our staffs who work in facilities and headquarter.

らいふ信条「私たちの基本行動」

不透明でどんなに環境変化の激しい時代にあっても、らいふは介護事業を通じて、高齢者の方が「生きがい」をもって、活き活きと暮らせる社会をつくっていきます。それは、社会貢献の先を行く事業であり、私たちにしかできない社会使命事業であると確信しています。

すべては、「ご入居者・ご家族の皆様への安心と信頼のために、高品質な介護サービスを提供し続けることを一人ひとりが常に意識できるよう私たちは、らいふ信条「私たちの基本行動」を掲げます。

《ご入居者をはじめ私たちと関係する社外のすべての皆様に向けて》

1. いつも、何事にも「思いやり」の気持ちを持ち続けます。

生きる力とは、ご入居者の存在そのものであるとの認識のもと、ご入居者の声や思いに耳を傾け、笑顔で安心できる生活をお届けします。常にご入居者・ご家族のお気持ちを読み取り、一つひとつの行動を相手の立場に思い換え、チームケアをモットーに期待に応えます。

2. お客様の立場にたつて「迅速」かつ「正確」な仕事を追求します。

高品質な介護サービスを維持しながら、より一層満足いただけるようスピードと正確さを併せ持ち、お客様の立場に立つて行動します。

《一緒に働く仲間に向けて》

3. 仲間に対しても「気配り・心配り」が大切です。

いかなる時でも、相手の認め、思いやる気持ちを持って、その思いを言葉にして仲間と共有します。思いこも悪いことも声を掛けあえる信頼関係のある職場づくりを目指します。

4. 改善・効率化に向けた「たゆまぬ努力」を続けます。

介護サービスのプロ集団として、現状に決して甘んじることなく介護サービスの品質向上のため、ルールを遵守し、必要に応じ見直しを行います。

《自分自身に向けて》

5. 「責任感」を持って仕事に取り組めます。

強い責任感を持ち、何事も曖昧にせず、分からないことは確認しながら確実に仕事を進めます。

6. どんなときでも、どんな人にも「やさしさ」と「いたわり」を持って接します。

常に相手の気持ち・立場を理解し、やさしさ・いたわりの気持ちを持って考え、行動します。

7. 一層の「主体性・積極性」を発揮します。

他人任せで「誰かがやってくれるから」ではなく、自ら気づいて積極的に行動します。



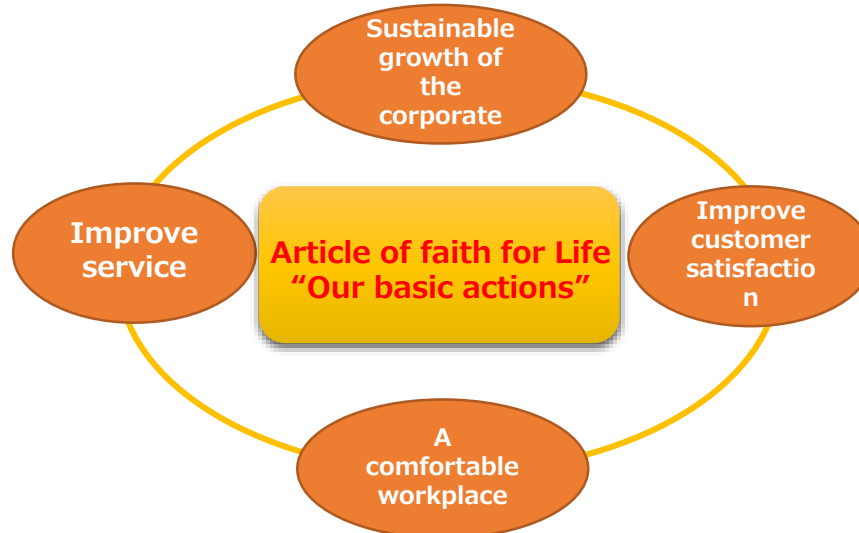
株式会社らいふ

Example: Our Promotion Paper in Japanese Language

Our Faith 「Our Basic Actions」

The direction of the company, organization, and oneself who becomes conscious of the action and the action of each employee

We have to build a society in which the elderly can realize their life value. It's our mission to provide "peace of mind, trust" and above, and meet customers' needs for "high quality care service" through professional and experienced talents. For these reasons, our creed "Our basic actions" exists.



A trial system for promotion

Corporate-specific volunteer promotion system instead of waiting for a recommendation from your boss, you can challenge yourself to a higher position.

You will be promoted if you set and achieve your goals within the set period. If you failed, you can still try again.



Commemorative photo of successful applicants at the closing ceremony. About 40 people challenged each time, about half passed and promoted.

トライアルレポート		トライアル 週間・ヶ月目レポート	TR期間		～
▼トライアル者		▼トライアル者名			
▲トライアル者氏名		▲試用職名			
▲所属		▼ポータル部内			
▲トライアル職種		▼年度		年 月 日	年 月 日
▼トライアル達成目標					
目標	達成率	1 週目 (%)	2 週目 (%)	3 週目 (%)	
▼今週/次週の行動目標		▼今回の達成度		▼次回までの行動目標	
今週の行動目標	行動数値(目標)	達成率	達成率	達成率	達成率
		(%)	(%)	(%)	(%)
		(%)	(%)	(%)	(%)
		(%)	(%)	(%)	(%)
		(%)	(%)	(%)	(%)
		(%)	(%)	(%)	(%)
		(%)	(%)	(%)	(%)
		(%)	(%)	(%)	(%)
		(%)	(%)	(%)	(%)
		(%)	(%)	(%)	(%)

Set trial achievement goals and try to clear these tasks and all your achievements will be evaluated.

Messages from staffs

Some words from our staffs who work in headquarter and facilities.

職種は違っても、
想いはひとつ。

らいふの仕事は、「総合職」「営業職」「介護職」の3つの職種にわかれます。担う業務は異なっていますが、ひとりでも多くの高齢者の「生きる力」を引き出すという同じ目標を持ち、3つの職種が連携して高齢化社会の課題解決に挑みます。



Shunsuke Kojima

Department Commander

【Profile】

- Recruited after graduation
- Sales Planning for facilities
- Want to be a facility administrator before 30yo.

Relief anxiety of people who are worried about nursing care issues.



Messages from staffs

Some words from our staffs who work in headquarter and facilities.



Asami Suzuki
Business development leader

【Profile】

- Recruited after graduation
- Payment management

Make correct payments to earn trust from our customers



Tsuyoshi Shigyou
Nursing care staff

【Profile】

- Recruited after graduation
- nursing care in facility

I want to work to make our customers smile and feel happy by communications.

Nursing homes

The nursing home of the facility stays for 24 hours, and the nursing care service such as laundry, bath, excretion, and nursing care can be received. In addition, the nurse is resident and the medical treatment is necessary.

A wide range of service is our advantage comparing with other companies

Key Point ①

○Wide range of services

In the medical aspect, it is difficult for home oxygen, stomach wax, insulin, Flexible case ,etc.

※Check P9 for Details

Key Point ②

○New life, care concierge

For special requests of going out for shopping or trips, our care concierge will help to make them real.

※Check P5 for Details

We are reported on magazines for our wide service range and special services



【LIFE Matsudoyabashira】

順位	施設名	市区町村	戸数	敷金の月分	利用料 月額 利用料	評価
2	ココファンあずみが丘	千葉市	92	2.0	11.5-17.6	72
3	アインストラッセ	印西市	20	1.0	9.8-11.1	70
4	ご隠居長屋 和楽久 流山	流山市	22	2.0	8.3	68
4	ココファン尾崎台	野田市	44	2.0	11.0-12.9	68
6	ココファン西船橋	船橋市	74	2.0	11.0-22.8	67
7	そんぼの家S 船橋印内	船橋市	125	0	11.9	66
8	鈴の庵	千葉市	28	0	14.8-16.3	64
8	ソレイユ倶楽部東つと	松戸市	19	2.0	11.6-11.7	64
8	そんぼの家S 船橋前原	船橋市	70	0	12.9	64
11	アゼリアガーデン	八千代市	42	2.0	11.2-13.7	63
11	ココファン柏原	柏市	64	2.0	11.2-14.3	63
13	ホームステーションらいふ松戸八柱	松戸市	87	0	13.0	62
14	ココファン柏豊四季台	柏市	105	2.0	10.6-24.7	61



【LIFE Seijyonogawaryokudo】

グリーンライフ藤	埼玉県蕨市 ☎048-430-0110	②	24.0万円
アズハイム町田	東京都町田市 ☎042-788-8541	②	25.0万円
らいふ成城 野川緑道	東京都世田谷区 ☎03-5761-7281	②	24.3万円
ベストライフ漢の口	神奈川県川崎市 ☎0120-515-472	②	21.6万円

We were represented at “Best Facilities Ranking” in 「Diamond Weekly (Aug, 2017)」

LIFE Matsudoyabashira is **No.13 !**

In 『Modern Weekly BEST 100 facilities at good price』

LIFE Seijyownogawaryokudo
is represented among over 9500 facilities in japan !

Housing for elderly with services

This is a senior-friendly housing with a barrier-free housing, meal provision, emergency response, safety confirmation, and life consultation services. Those who need nursing care can receive home care using only the necessary services.

In-home nursing care and home care support offices

Because it is a private room, you can protect your privacy and you are free to go out. In the unlikely event of a caregiver, you can live with peace of mind for a long time.

● Homestation Life Tama-Plaza



【Add】 12-25 Inugura,
Miyamae-Ku, Kawasaki City
【TEL】 +82-44-863-9151

【Navigation】
 ・ Toukyu Denentoshi Line, Tama-plaza station, Take a bus for 4 mins to Miyamae-Utsukushimori stop and walk for 3 mins
 ・ Toumei Highway , near the Kawasaki IC

● LIFE · Kutsurogi Inadazutsumi



【Add】 1-11-5 Sugeinatazutsumi,
Tama-Ku, Kawasaki City.
【TEL】 +81-44-819-5360

【Navigation】
 ・ JR Nanbu Line, inadazutsumi station walk for 4 mins
 ・ Keio Sagamihara Line , Keio Inadazutsumi Station

「Diamond Weekly」
(Aug,2017)

Housing for elderly with services
RANKING
 In Kanagawa Prefecture

No.81!

Rank	Name	City	Area (sqm)	Price (1000 yen)	Price (1000 yen)
81	ココファンメゾン中里	小田原市	50 2.0	13.1-13.4	47
81	ココファンレジデンス平塚やさか	平塚市	43 3.0	9.8-13.1	47
81	フレイグラントオーリーブナナ	相模原市	32 2.0	13.3-13.8	47
1	らいふ・くつろぎ稲田堤	川崎市	59 0	13.8	47
81	リーフェスコートあじさいの丘II	秦野市	30 3.0	10.9-17.9	47
87	クラシック・コミュニティ横浜	横浜市	98 2.0	11.1-19.1	46
87	福寿いせはら上船屋	伊勢原市	40 4.0	8.4-11.8	47

Home Visit Service

LIFE provide a home visit service for nursing care among all 23 districts of Tokyo. We can serve you 24 hours or even accompany with you in hospital. We provide good services for people who need or being worried about nursing care.

**Service Ares:
23 Districts of Tokyo**

120 Registered staffs

130 Customers
(contains about 25 Disabled customers)

Treatments for those who have disabilities

Nurse-qualified helpers are also enrolled, and can be used by those who require severe nursing care such as sputum aspiration, gastric fistula, and ALS.

Nurses

Staffs who completed training such as sputum aspiration

Staffs who completed medical practice training in Tokyo

24hours everyday

LIFE dispatches helpers 24 hours, 365 days. We also provide long-term care and overnight care, and respond to various requests such as those who need to watch over at night and those living alone.

Nursing for Long-Term

Nursing staff with short residence

Speedy service delivery

Emergency cases are also supported, such as wanting you to come from today's night or to come in tomorrow morning. We support home life at an unprecedented speed.

Staffs dispatch on the day

Services for urgent requests

Self-paid services

It is also possible to handle parts that cannot be covered by public expenses.

A combination of long-term care insurance, self-service, and support costs is also possible, and long-term care is also available.



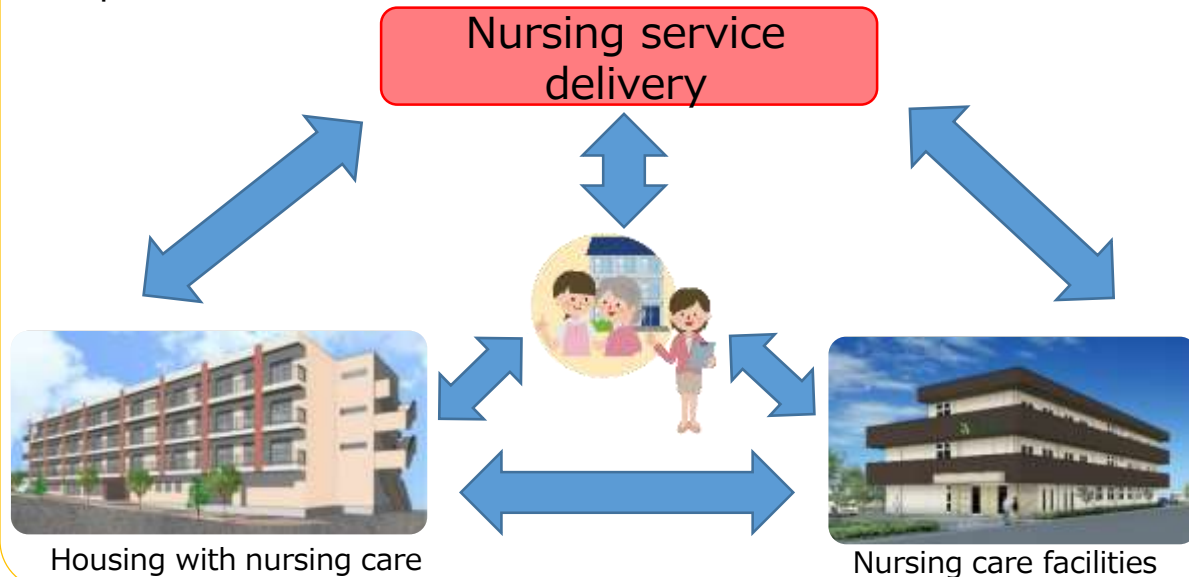
We can provide service even you were refused by other companies.

Support for nursing care at home

We support elderly people who live at home and need nursing care. We talk with the person who takes care and his / her family, think together about the necessary care services and future life goals, and create a care plan.

We support with quick cooperation and proposal capabilities utilizing various options

We operate home-visit nursing care, paid nursing homes and nursing homes in-house, and support individuals and their families both at home and at facilities with quick internal cooperation.



We have qualified care manager with experience and knowledges

We have care managers with experience, achievements, knowledge, and qualifications, and we can propose various personalized care plans.

Qualified Nursing Staff

A national qualification with specialized knowledge and skills that provides care and provides guidance on care.

Qualified Social Staff

Experts who receive consultations and advice on social welfare services.

Mental health staff

A profession (national qualification) that advises and supports mentally disabled people so that they can return to society.

Chief Care Manager

Senior care manager who was qualified by a high level qualification.

As our service areas are located in Tokyo, your care manager would be changed if your address changed in Tokyo.

～らいふ執事 ご利用案内～



こだわりを追究する方へ
ハイクラスなスタッフがお手伝いします。

株式会社LIFEは、創業以来23年間、訪問介護事業と有料老人ホーム運営事業において、単なる介助ではなく「生きる力を引き出す介護®」をコンセプトにご利用者様・ご入居者様のご要望にお応えしてきました。



取締役 小林 司

この度、ご利用者様のワンランク上の
ご要望にお応えするため、介護の枠を超
えた新たなサービス「LIFEホームマネジ
メントサービス」を開始致します。

セカンドライフを充実させたいと
お考えの幅広いお客様に、専任のスタ
ッフが「執事」としてサービスを提供
いたします。是非ご利用いただき、
皆様おひとりお一人のライフプランの
実現にお役立て頂ければ幸いです。

Example: Our Promotion Paper in Japanese Language

What is Life Home Management Service?

The home management service of our company is the service from our executive staff "LIFE Butler", as the name of a butler. There are wide service menus, such as arranging travel and going out, without costing the nursing care insurance frame.

Especially for our special customers
High class staff will help you.

～A Example from our services～

- Put files and documents in order
- Negotiation with attorneys and tax accountants in a specific case (Reception, Guidance and Welcome tea services)
- Arrangement of going outside (renting cars, restaurants booking, etc.)
- Other requests which you want us to help you to do…….

～Process of providing service～

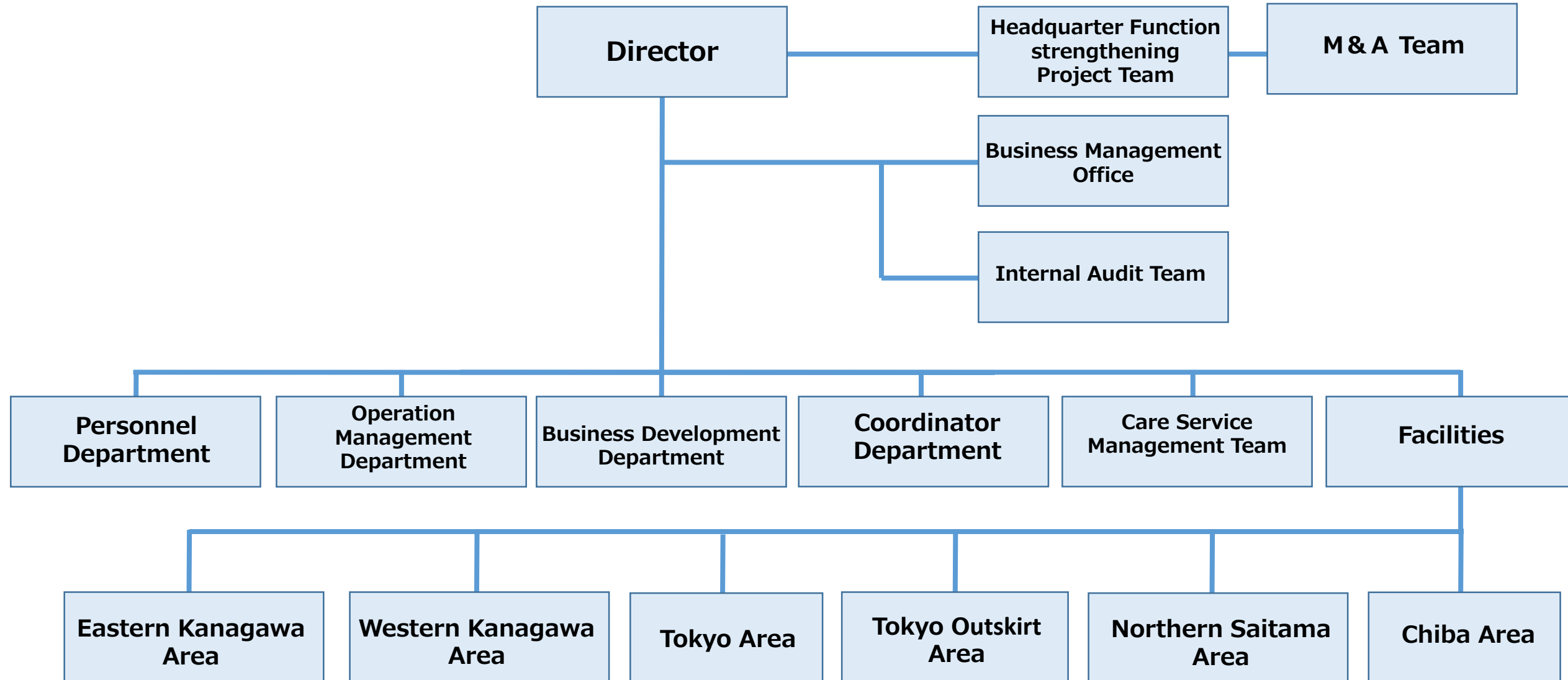
- | | | |
|--|---|---|
| STEP1 TEL : 0120-055-218
Tell us what you want us to help you. | STEP3 We will choose the most suitable staff for your requests. | STEP5 If you still need our service, we will follow up more your requests and try to improve our service better and better. |
| STEP2 Our headquarter staff will visit and check the details of your orders. | STEP4 Our headquarter staff will go with service staff together and gather your advices when service ended. | |

3. Company Profile (1) Overview

Headquarter located at Tennozu Central Tower



Company Name	Life Co., Ltd
Location	18F, 2-2-24 Higashi-Shinagawa, Shinagawa-KU, Tokyo, 140-0002, Japan TEL:+81-3-5769-7268 FAX:+81-3-5769-7269
Business	①Nursing home for the aged ②Housing for elderly with services ③Home visit service ④Support for nursing at home ⑤Home Management Service
Establish Date	9th Nov, 1995
資本金	100 million yen (JPY)
President	Mr. Shinichi Yoshida
Employees	1,720 (2019)
Group Sales	12.3 Billion yen (2019)
Directors	CEO : Mr. Shinichi Yoshida Managing Director : Ms. Hiromi Notoya Director : Mr. Tsukasa Kobayashi Part-time Director : Mr. Tetsuri Bando Mr. Hirogi Nakayama Auditor : Mr. Isami Matsuzaka
Banks	Yokohama Bank – Yokohama-Ekimae Branch Mizuho Bank – Gotanda Branch Sumitomo Mitsui Banking Corporation - Gotanda Branch



3.Company Profile (3) Branches① Facilities

<Tokyo>			
LIFE Kyodo	156-0053	1-31-5Sakura,Setagaya-ku,Tokyo	03-5426-2278
LIFE Kamata	146-0094	3-6-23Higashiyaguchi,Ooda-ku,Tokyo	03-3738-6011
LIFE Chitosefunabashi	156-0055	3-1-11Funabashi, Setagaya-ku,Tokyo	03-5426-1181
LIFE Takadanobaba	169-0075	1-30-1 Takadanobaba,Shinjyuku-ku,Tokyo	03-5291-1461
LIFE Seijyonishi	201-0004	4-2-36 Iwato Kita, Komae City,Tokyo	03-5761-5871
LIFE Seijyownogawaryokudo	157-0067	9-24-22 Kitami,Setagaya-ku,Tokyo	03-5761-7281
LIFE Kiyose	204-0022	1-4-16 Matsuyama, Kiyose City,Tokyo	042-497-2681
LIFE Kodaira	187-0032	1-3002-10, Ogawa Town, Kodaira City,Tokyo	042-313-5181
LIFE Hasune	174-0043	3-30-17 Sakashita,Itabashi-ku,Tokyo	03-6367-0071
LIFE Umeyashiki	143-0014	3-16-2 Omorinaka,Oodaku,Tokyo	03-6756-0550
LIFE Machida	194-0005	175-1 Tsuruma, Machida City, Tokyo	042-813-1165
LIFE Nakaitabashi	173-0021	75-10 Yayoi-cho, Itabashi-ku,Tokyo	03-6372-1165
LIFE Mitaka	181-0012	7-10-10 kamirenjaku,Mitaka-city,Tokyo	0422-57-2210
LIFE Hino	191-0012	1048-1 Ozahino,Hino City,,Tokyo	042-589-6111

<Saitama>			
LIFE Sayama	350-1305	1528-1 Irumagawa, Sayama,Saitama Pref.	04-2009-0091
LIFE Higashiurae	336-0926	5-27-13 Higashiurawa, Midori-ku, Saitama-shi,Saitama Pref.	048-810-4555
LIFE Kawagoe	350-1124	3-20-1 Shinjuku-cho, Kawagoe-shi,Saitama Pref.	049-291-3580
LIFE Kawaguchi	333-0861	4-8-33 Yanagizaki, Kawaguchi City,Saitama Pref.	048-264-6262
LIFE Sashiogi	331-0062	242-1 Tsuchiya, Nishi-ku, Saitama-city,Saitama Pref.	048-622-3900
LIFE Kawaguchi Motogo	332-0011	6-8-5 Motogo, Kawaguchi City,Saitama Pref.	048-227-5670
LIFE Irima	358-0014	2803-12 Miyadera, IrumaSaitama Pref.	04-2935-0530
LIFE Yonohonmachi	338-0013	6-12-10 Suzuya, Chuo-ku, Saitama-city,Saitama Pref.	048-829-9431
LIFE Souka	340-0031	117-2 Niisato-cho, Soka-City,Saitama Pref.	048-951-1762
LIFE Omiya	330-0842	1-181 Asama-cho, Omiya-ku, Saitama-city,Saitama Pref.	048-691-1165

<Kanagawa>			
LIFE Nakayama	226-0014	350, Taimuracho, Midori-ku, Yokohama 4th floor of Yajima Building,Kanagawa Pref.	045-931-4003
LIFE Yamato	242-0013	1-9-6 Fukamidai, Yamato,Kanagawa Pref.	046-260-2151
LIFE Futamatakawa	241-0023	66-2 Honjuku-cho, Asahi-ku, Yokohama-shi,Kanagawa Pref.	045-360-8270
LIFE Mizonoguchi	213-0011	3-2-5 Hisamoto, Takatsu-ku, Kawasaki-shi,Kanagawa Pref.	044-850-5567
LIFE Ebina	243-0433	2-7-18 Kawaraguchi, Ebina City,Kanagawa Pref.	046-236-0611
LIFE Musashishinjyo	211-0042	2-7-33 Shimoshinjo, Nakahara-ku, Kawasaki,Kanagawa Pref.	044-740-3191
LIFE Hashimoto	252-0134	1406-1 Shimokuzawa, Midori-ku, Sagami-hara-City,Kanagawa Pref.	042-760-6661
LIFE Aikoishida	243-0035	3-6-7 Aiko, Atsugi,Kanagawa Pref.	046-270-7810
LIFE Odakyusagamihara	252-0312	4-24-55 Sainan, Minami-ku, Sagami-hara-city,Kanagawa Pref.	042-767-5512
LIFE Yugawara	259-0303	2-14-28 Toi, Yugawara-machi, Ashigarashimo-gun,Kanagawa Pref.	0465-60-4101
LIFE Shounankaneka Yugawara	259-0316	174-1 Fukuura Yoshihama, Yugawara-machi, Ashigarashimo-gun,Kanagawa Pref.	0465-60-0151
LIFE soubudai	252-0021	6-26-7 Midorigaoka, Zama-City,Kanagawa Pref.	046-207-2901
LIFE Samugawakurami	253-0101	422-1 Kurami, Samukawa-cho, Koza-gunKanagawa Pref.	0467-72-5610
LIFE manatsuru	259-0201	1359-1 Manazuru, Manazuru-machi, Ashigarashimo-gun,Kanagawa Pref.	0465-68-1851
LIFE Odawara	250-0003	5-13-44 Higashicho, Odawara City,Kanagawa Pref.	0465-25-0230
LIFE ・ kutsurogi Inadazutsumi	214-0003	1-11-5 Suga inadazutsumi, Tama-ku, Kawasaki,Kanagawa Pref.	044-819-5360
LIFE tama-plaza	216-0011	2-12-25 Inugura, Miyamae-ku, Kawasaki-City,Kanagawa Pref.	044-863-9151
LIFE ・ Green terrace chigasaki	253-0011	2-16-12 Hishinuma, Chigasaki-City,Kanagawa Pref.	0467-54-3751
LIFE ・ Green terrace shounanfujisawa	252-0816	855-4 Endo, Fujisawa-city,Kanagawa Pref.	0466-53-7728

<Chiba>			
LIFE Inagakaigan	261-0004	1-1-13 Takasu, Mihama-ku, Chiba-shi,Chiba Pref.	043-375-6813
LIFE Matsudoyabashira	270-2253	7-8 Higurashi, Matsudo,Chiba Pref.	047-710-0546
LIFE Makuharihonkou	262-0033	1-15-1 Makuhari Hongo, Hanamigawa-ku, Chiba-City,Chiba Pref.	043-376-7670
LIFE Kashiwanami / Hanamizuki	277-0054	6-15-19 Minamimasuo, Kashiwa City,Chiba Pref.	04-7160-5811

3.Company Profile (3) Branches ② Care Service Department

<Home care support office / visit care office>

LIFE designated home care support office	140-0002	18F,2-2-24 Higashishinagawa, Shinagawa-ku, Tokyo	03-5769-7266
LIFE Home Help Service	same as above	same as above	same as above
LIFE・Yoyogi designated home care support office LIFEHOME HELP SERVICE Yoyogi Office	151-0053	Maple Yoyogi 4F,1-30-3 Yoyogi, Shibuya-ku, Tokyo	03-5304-7034
LIFE・Kutsurogi Inadazutsumi designated home care support office	214-0003	1-11-5 Sugeinadazutsumi,Tama-ku,Kawasaki City,Kanagawa Pref.	044-819-5360
LIFE・KutsurogiInatatsudumi HOME HELP SERVICE	same as above	same as above	same as above
LIFE Tama-Plaza designated home care support office	216-0011	2-12-25 Inugura,Miyamae-ku,Kawasaki City,Kanagawa Pref.	044-863-9151
LIFE Tama-Plaza HOME HELP SERVICE	same as above	same as above	same as above
LIFE・Fureai Nursing Service Nogata designated home care support office	165-0027	1F San Crivage Nogata,6-6-2 Nogata, Nakano-ku,Tokyo	03-5327-3930
LIFE・Fureai Nursing Service Nogata HOME HELP SERVICE	same as above	same as above	same as above
LIFE・Fureai Nursing Service Nerima designated home care support office	176-0011	2-21-6 Upper Toyotama,Nerima-Ku,Tokyo	03-5912-6330
LIFE・Fureai Nursing Service Nerima HOME HELP SERVICE	same as above	same as above	same as above
LIFE・Fureai Nursing Service Asagaya designated home care support office	166-0004	201-2F,1-13-17 Northern Asagaya, Suginami-ku,Tokyo	03-5307-3930
LIFE・Fureai Nursing Service Azagaaya HOME HELP SERVICE	same as above	same as above	same as above
Popuri Chigasaki designated home care support office	253-0011	2-16-12 Hishinuma, Chigasaki City,Kanagawa Pref.	0467-52-5531
Nursing Delivery Station Popuri Chigasaki	same as above	same as above	same as above
Popuri ShonanFujisawa designated home care support office	252-0816	855-4 Ento,Fujisawa City,Kanagawa Pref.	0466-53-7728
Nursing Delivery Station Popuri ShonanFujisawa	same as above	same as above	same as above

<Outpatient care / preventive care outpatient care>

LOVE・LIFE・ENJOY Daily Service Center	241-0023	66-2 HonjyukuCho,Asahiku,Yokohama city,Kanagawa Pref.	045-360-8272
Rehabilitation daily service – Hureai	165-0027	1F Sun Clivage Nogata,6-6-2 Nogata,Nakano-Ku,Tokyo	03-5327-3980
Daily Service Popuri Chigasaki	253-0011	2-16-12 Hishinuma, Chigasaki City,,Kanagawa Pref.	0467-52-5531
Daily Service Popuri Shonanfujisawa	252-0816	855-4 Ento,Fujisawa City,Kanagawa Pref.	0466-53-7728